



HASEEB RASOUL ENGINEERING
Office 102, First Floor, Corniche Plaza II
Buheirah Corniche. PO Box 196 Sharjah UAE.
Tel: +971 6 5722951
Email: hrasoul@eim.ae



RASOUL INTERIOR DECORATION
Office 1801, Executive Bay-B
Business Bay, PO Box 116919 Dubai UAE.
Fax: +971 6 5722952
Web: www.hrasoul.ae



THE COMPANY

Haseeb Rasoul Co, Ltd, founded in Aden, specializes in the interior and furnishing fields. In 1967, the Company moved to Sharjah (United Arab Emirates) and by keeping abreast of the latest developments in the field of manufacturing, now commands a significant regional market share.

The manufacturing facility, certified ISO 9002, is equipped with the latest machinery, ensuring a streamlined production, which controls quality from procurement to delivery and installation.

The multinational manufacturing work force of skilled craftsmen contributes to a wealth of experience in fine furnishings and interiors.

In 1992, Haseeb Rasoul Engineering Consultants was established to complement the manufacturing set up, to ensure that clients were offered a complete design and build package, covering a full start-to-finish turnkey solution.

Rasoul Interior Decoration was incepted in the year 2011 to supplement our engineering team.

In addition to a dedicated team of managers; HRE and Rasoul Interior Decoration are run by qualified architects, interior designers and engineers, striving to satisfy the client's need from conceptual design to the last finishing detail.

With the design office set up in place, turnkey solutions were offered to specific market sectors – corporate interiors, commercial and retail outlets – covering offices, private and retail banks, financial institutions, shops, restaurants, coffee shops, specialized outlets, etc.

The turnkey solution was the favorite ingredient with all our clients as we offered all services under one umbrella required to design, start, manage, complete and handover the job on time. Our service included and was not limited to conceptual design, specifications, local authorities' submittals and paper works, detailed MEP and architectural drawings and of course site execution and project management.



Our Objectives:

It is our mission to plan and create spaces for our clients to live-in and work - in making sparing use of resources while maintaining high level of design quality.

Architectural Services:

We provide a complete solution to a design project including conceptual design to detailed drawings encompassing architectural, MEP and Structural design, dealing with statutory authorities, site co-ordination and supervision.

Our innovative concepts enable us to create an optimal Standard of Living with and inside the structures we design. Meticulously worked out methods to project is employed for smooth completion of projects.

Architecture for us means team work, discussion and high-quality service based on an exceptional level of mutual trust. Our continuous communication with our clients and close co-operations help us to find rapid solutions to even complex problems. The end result of which is happy and satisfied clientele.

INTERIOR PROJECTS

CORPORATE OFFICES

- ✓ Imdad, Boulevard Plaza, Dubai
- ✓ Orascom, DIFC, Dubai
- ✓ BB Energy, EFT, Dubai
- ✓ Kairos Investments, Business Central Tower, Dubai
- ✓ Prime Holding, DIFC, Dubai
- ✓ Faruk Holding, DIFC, Dubai
- ✓ Carbon Holding, DIFC, Dubai
- ✓ Investbridge Capital, DIFC, Dubai
- ✓ Fresh Express Warehouse, DIP, Dubai
- ✓ LRIM & GULFMENA office, DIFC, Dubai
- ✓ MTN (Mobile Technology Network), AL Fattan Currency House, Dubai

CORPORATE OFFICES

- ✓ BCG (Boston Consulting Group Office), Media City, Dubai
- ✓ The Executive Office Head Quarters DHCC, Dubai
- ✓ Dubai Capital Group Office, Level 29, Emirates Towers, Dubai
- ✓ Dubai Investment Group Office, DIFC, Dubai
- ✓ Dubai Holding Head Quarters, Level 49, Emirates Tower Dubai
- ✓ The Executive Office, Level 37, Emirates Towers, Dubai
- ✓ The Executive Office, Level 43, Emirates Towers, Dubai
- ✓ The Executive Office, Level 44, Emirates Towers, Dubai
- ✓ The Executive Council Office, Ground Floor, DHCC, Dubai
- ✓ The Executive Council Office, 1st Floor, DHCC, Dubai
- ✓ The Executive Council Office, 4th Floor, DHCC, Dubai

CORPORATE OFFICES

- ✓ Shuaa Capital Office Offices, Emirates Towers, Dubai
- ✓ Shuaa Partners Offices, DIFC, Dubai
- ✓ Shuaa Capital Office, Abu Dhabi
- ✓ InvestBank, Sharjah Industrial Area Branch, Sharjah
- ✓ InvestBank, SZR, Dubai
- ✓ InvestBank, Mussafah Branch, Abu Dhabi
- ✓ InvestBank, Saif Zone Branch, Sharjah
- ✓ InvestBank, Dhaid Branch, Sharjah
- ✓ InvestBank, Ajman
- ✓ Julius Baer office, Emirates Towers
- ✓ Abraaj Capital Office, Level 08, Emirates Towers, Dubai

CORPORATE OFFICES

- ✓ Abraaj Capital Office, Level 07, Emirates Towers, Dubai
- ✓ Abraaj Capital Office Level 10, Emirates Towers, Dubai
- ✓ Emirates Computer Office, Dubai
- ✓ Emirates Computer Office, Dubai
- ✓ Emirates Computer Office, Abu Dhabi
- ✓ Carrefour Head Office, Lexus Towers, Dubai
- ✓ Arabian Construction Office, Dubai
- ✓ Scimitar Capital Office, Capricon Towers, Dubai
- ✓ Al Reef Property Development offices, Dubai
- ✓ Roche Pharmaceuticals Warehouse, DAFZA

RETAIL AND F&B OUTLETS

- ✓ Tango Restaurant, Gate Avenue, Dubai
- ✓ AVEC Restaurant, Media City, Dubai
- ✓ Nouran Lighting Solutions Showroom, Dubai
- ✓ Paolo Bonja Jewelry Showroom, Burjuman Extension, Dubai
- ✓ Guess Showroom, Deira City Center, Dubai
- ✓ Omega Boutique, Wafi City Center, Dubai
- ✓ Guess Showroom, Burjuman Extension, Dubai
- ✓ Dukkan, Madinat Jumeirah Dubai
- ✓ Wallner Jewelry Showroom, Wafi City Center, Dubai
- ✓ Wallner Jewelry Showroom, Deira City Center, Dubai
- ✓ Trend Studio, Deira City Center, Dubai
- ✓ Trend Studio, Wafi City Center, Dubai

PRIVATE RESIDENCES

- ✓ Villa 15 - Interior & Landscape, Bvlgari Mansions, Dubai
- ✓ Private Penthouse at Unit 271 & 265, Bvlgari Penthouses, Dubai
- ✓ Private Residence - Plot 56, The Palm Jumeirah, Dubai
- ✓ Magrabi Residence, Umm Al Sheif, Dubai
- ✓ Private Villa, Mizhar, Dubai
- ✓ Private Penthouse Residence, Index Tower, Dubai
- ✓ Villa – Al Manara Plot 363-392, Jumeirah, Dubai
- ✓ Fili Farm House, Fili Farm, Sharjah
- ✓ Villa (G+1) Interior & Landscape, Plot B39, The Palm Jumeirah, Dubai
- ✓ Private Residence Rosa 65, Arabian Ranches, Dubai

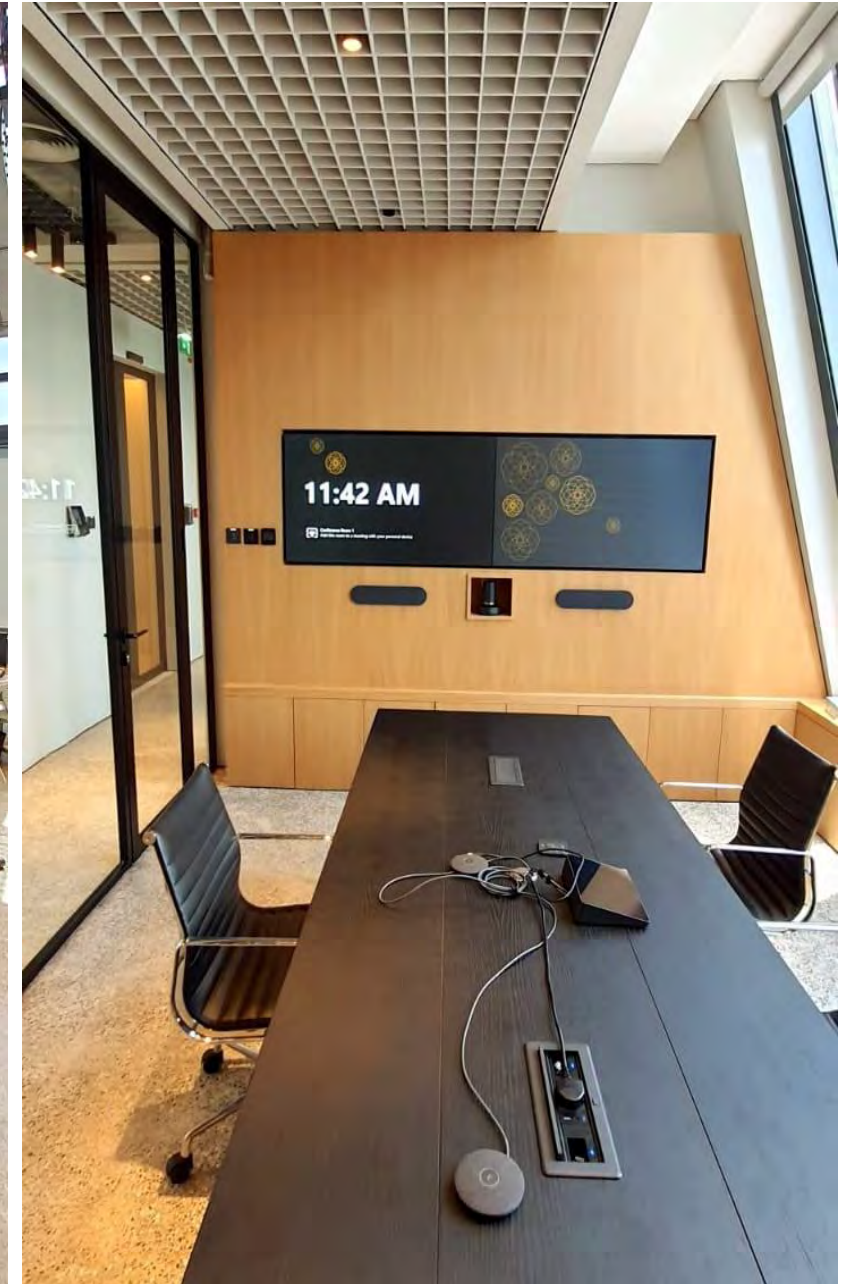
IMDAD OFFICE



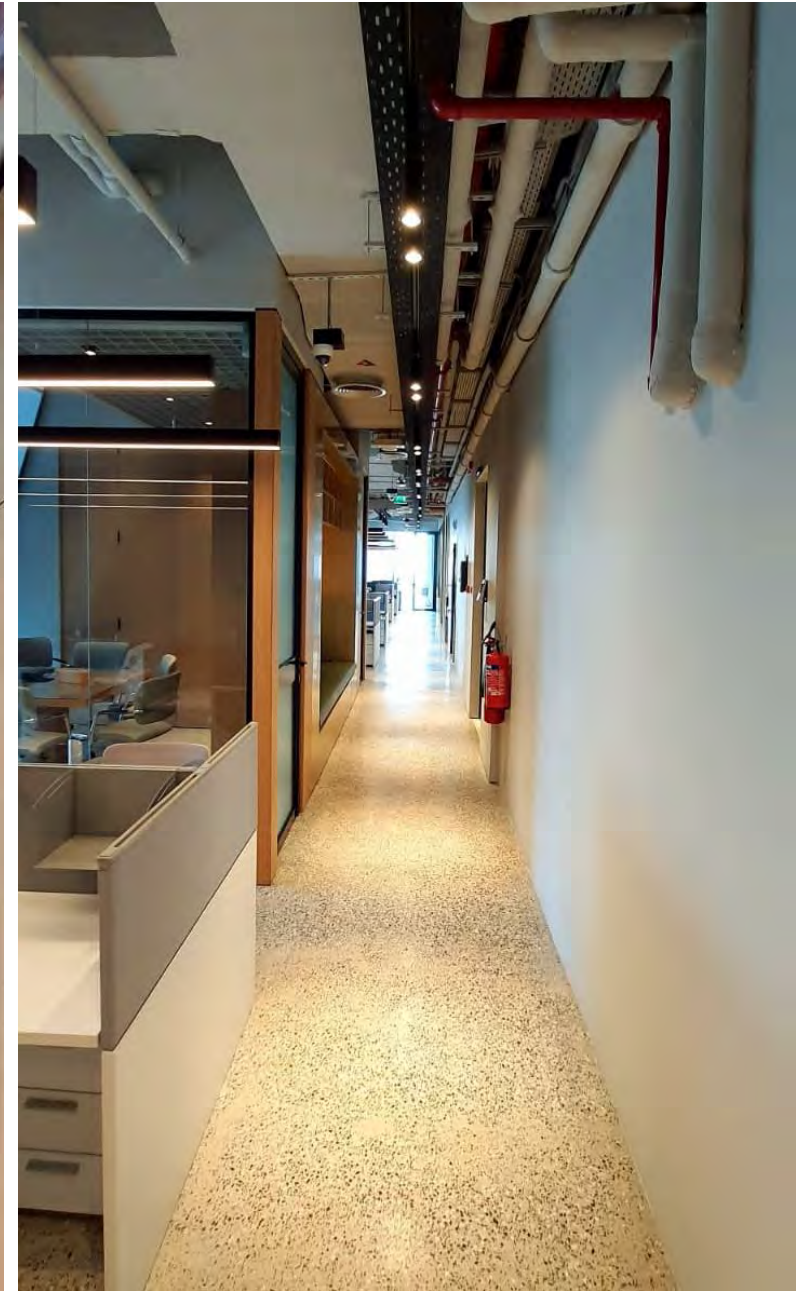
IMDAD OFFICE



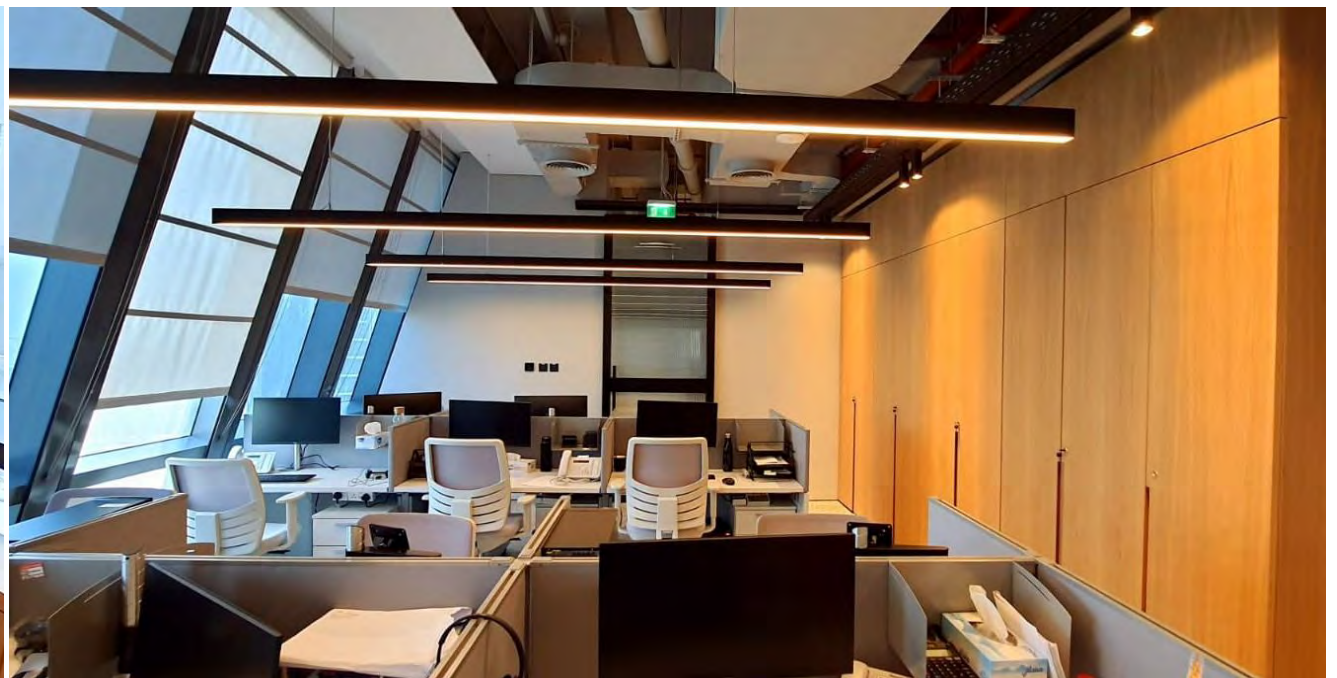
IMDAD OFFICE



IMDAD OFFICE



IMDAD OFFICE



ORASCOM OFFICE



ORASCOM OFFICE



ORASCOM OFFICE



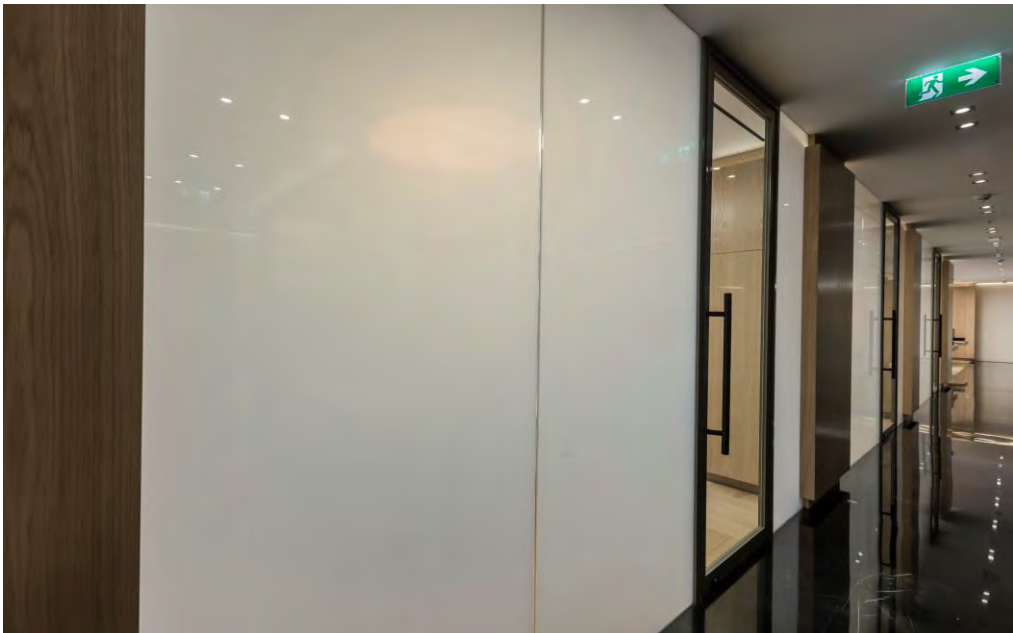
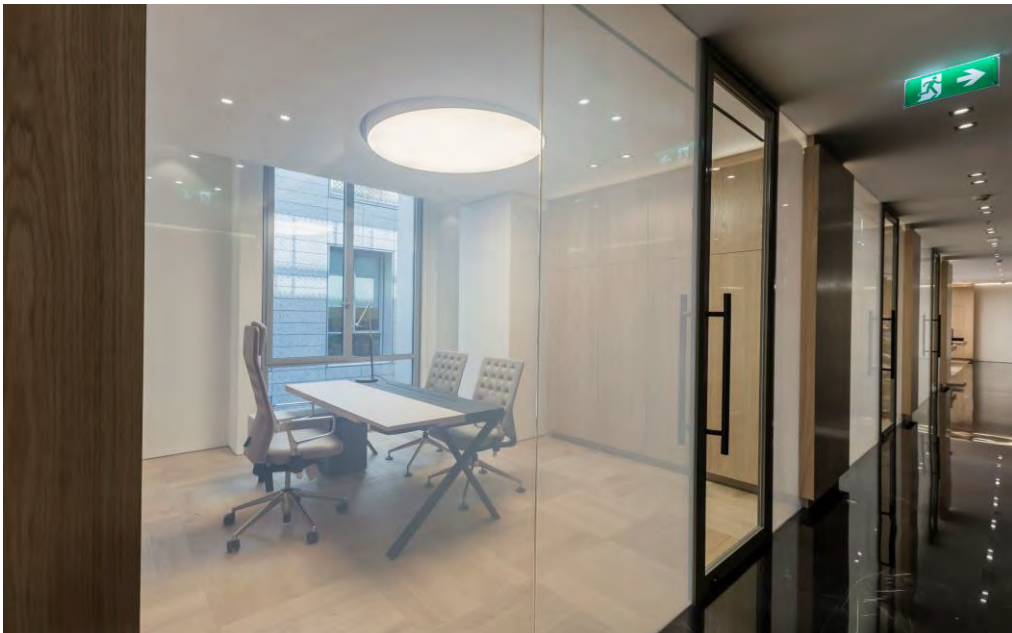
ORASCOM OFFICE



ORASCOM OFFICE



ORASCOM OFFICE



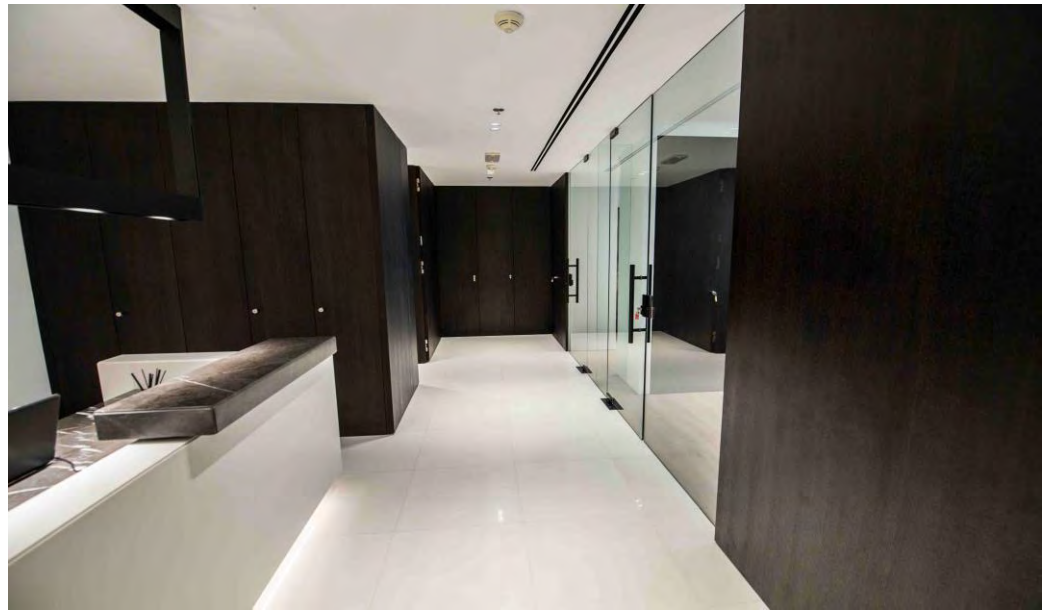
ORASCOM OFFICE



ORASCOM OFFICE



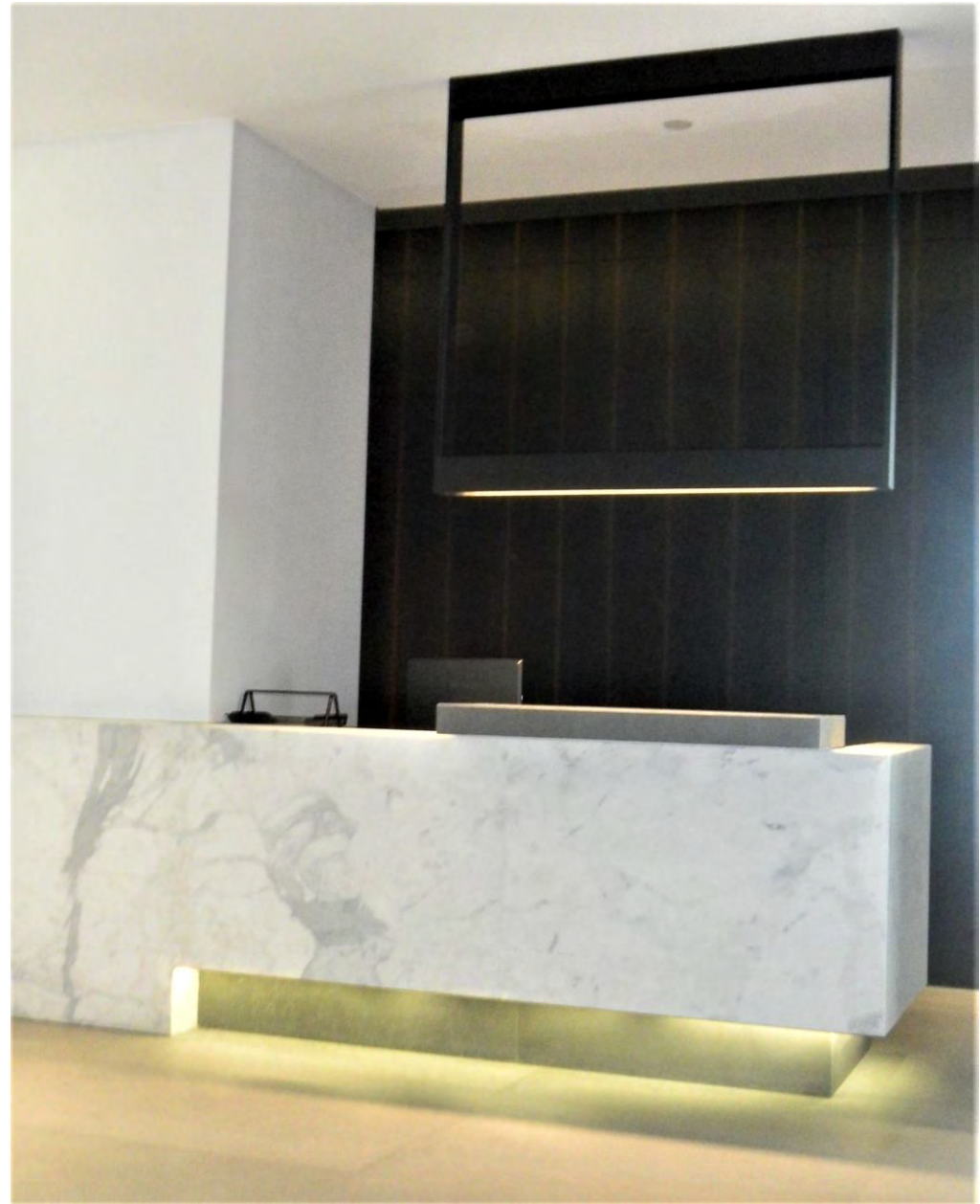
KAIROS OFFICE



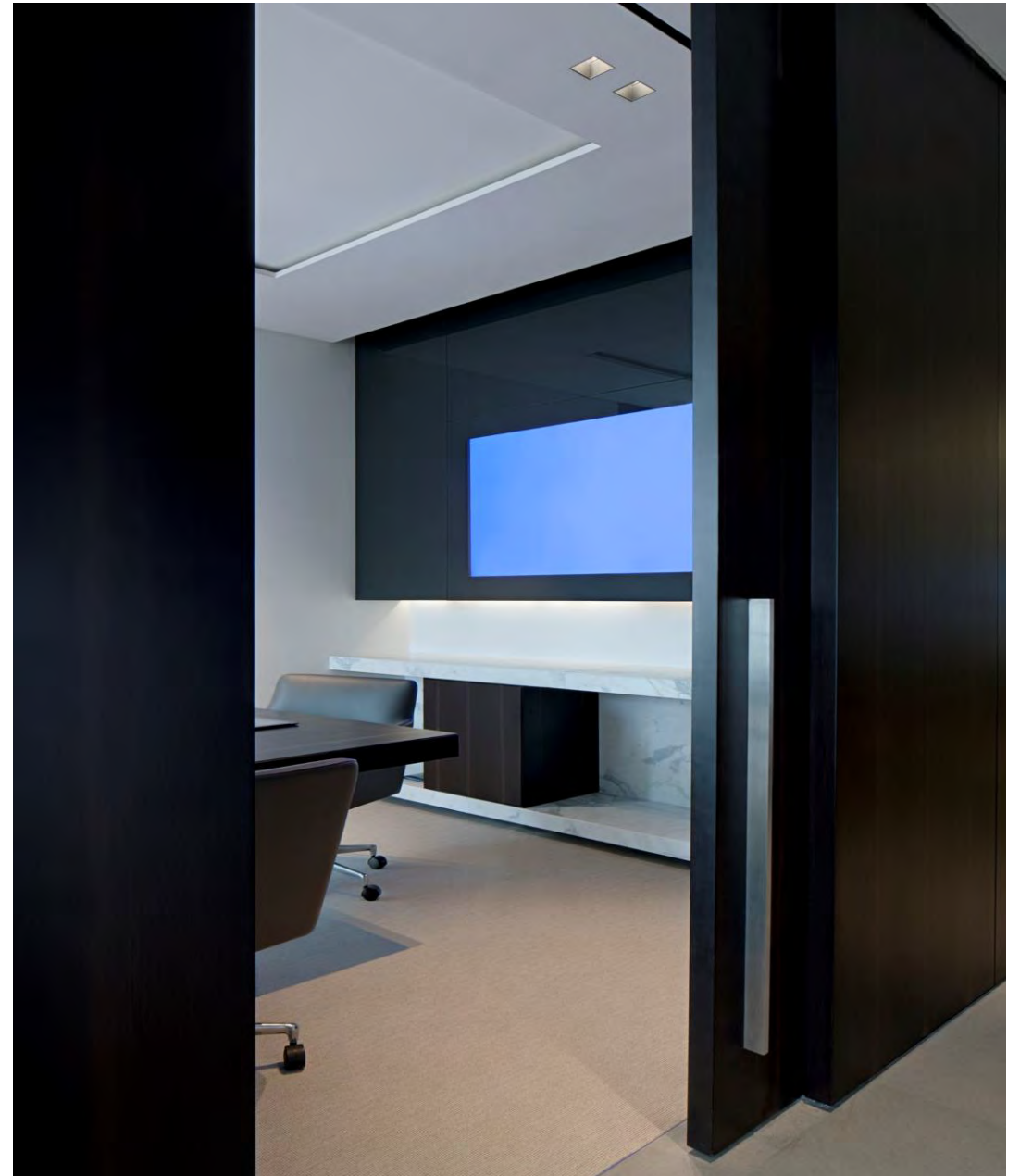
KAIROS OFFICE



PRIME HOLDING



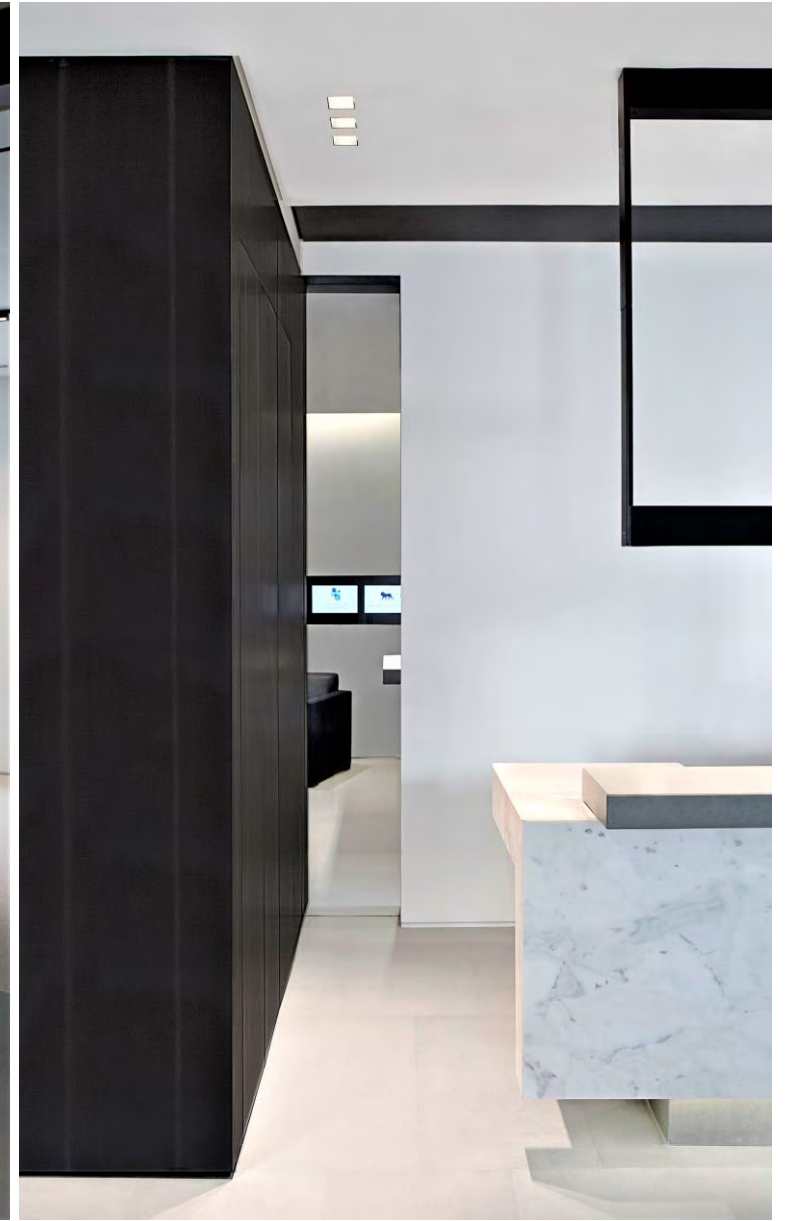
PRIME HOLDING



PRIME HOLDING



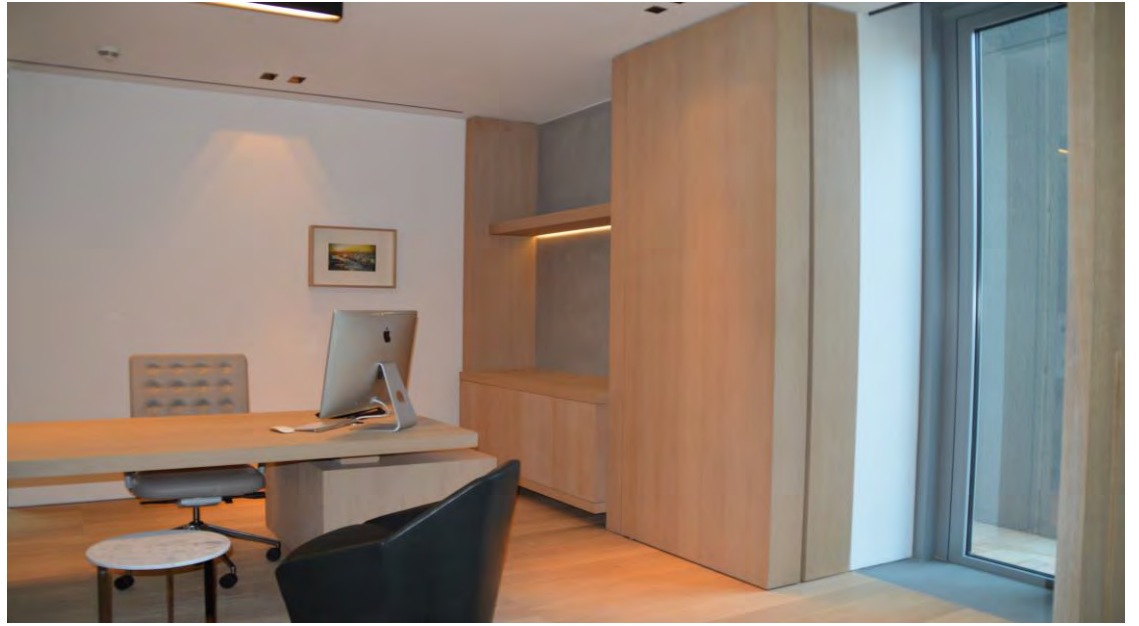
PRIME HOLDING



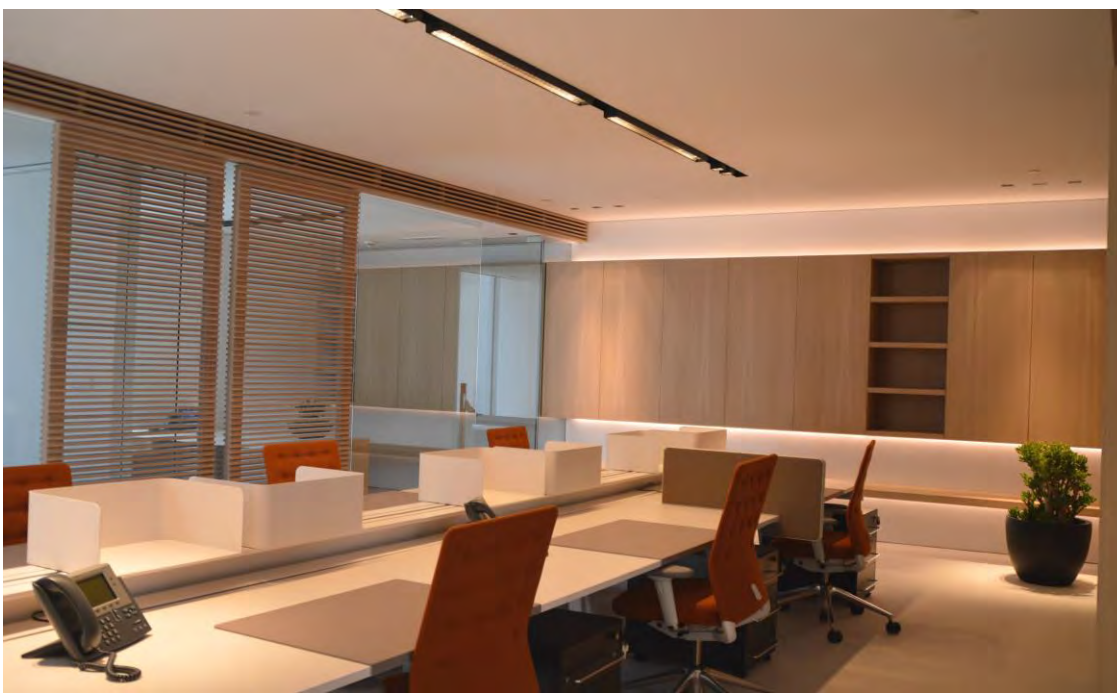
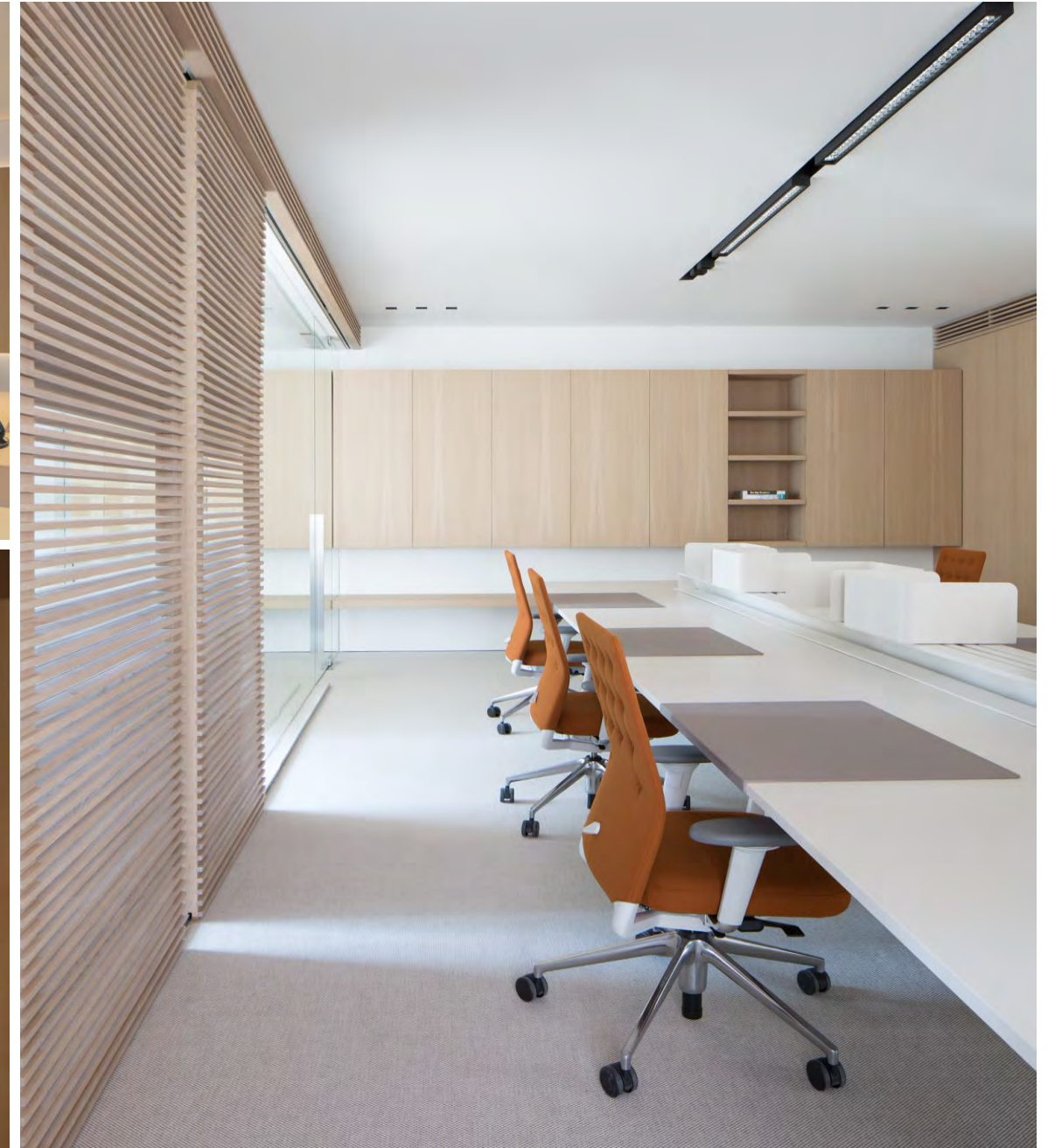
FARUK HOLDING



FARUK HOLDING



FARUK HOLDING



FARUK HOLDING



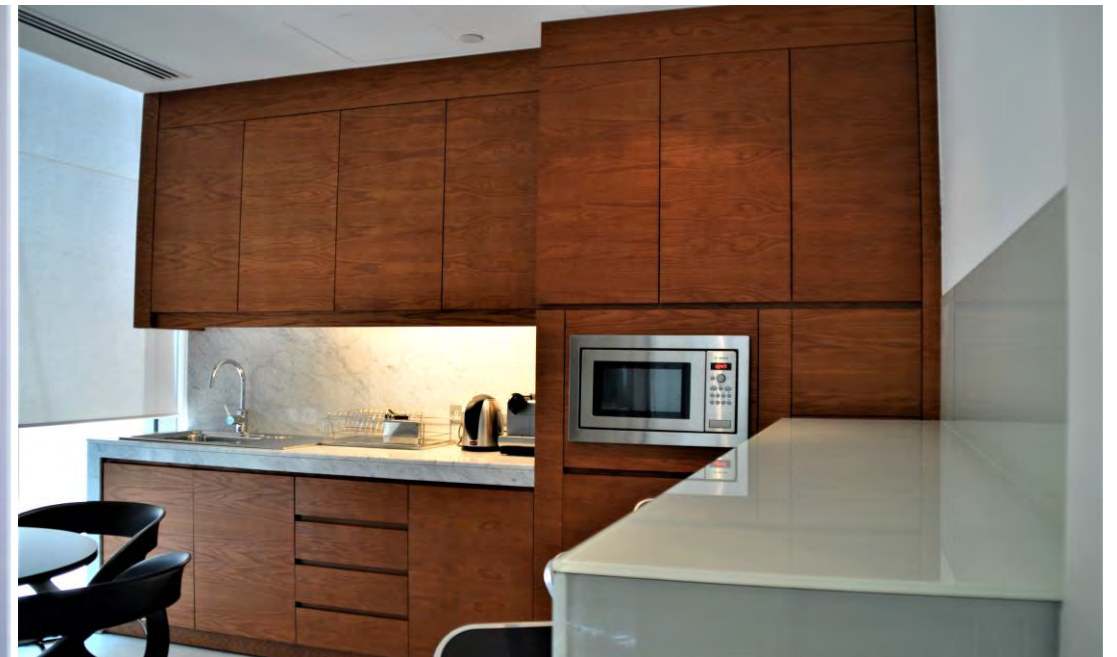




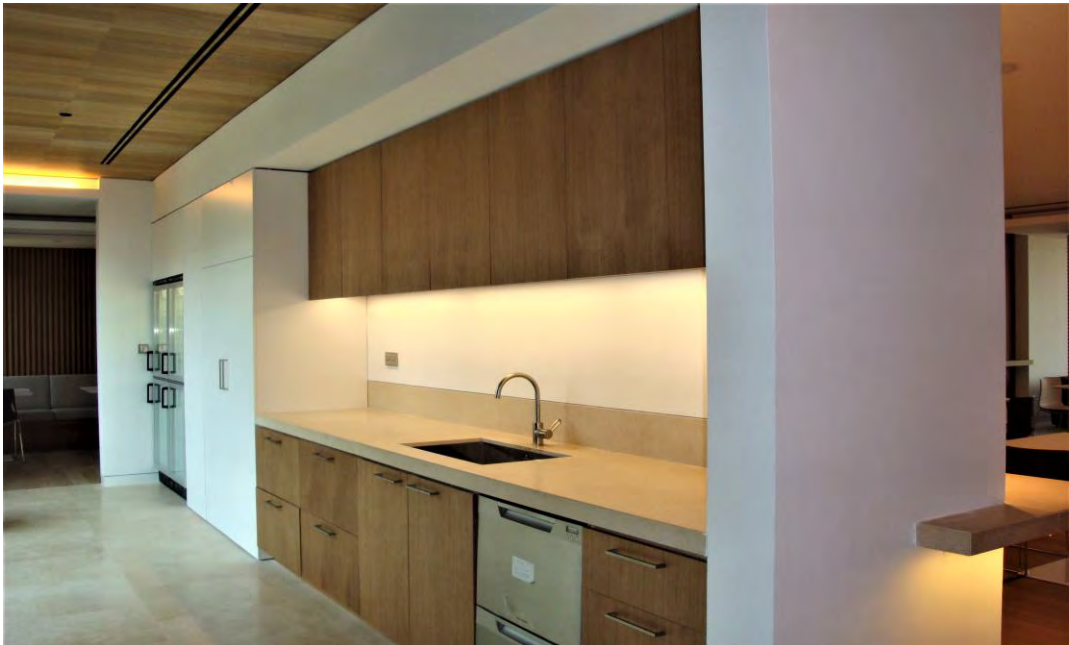
CARBON HOLDING



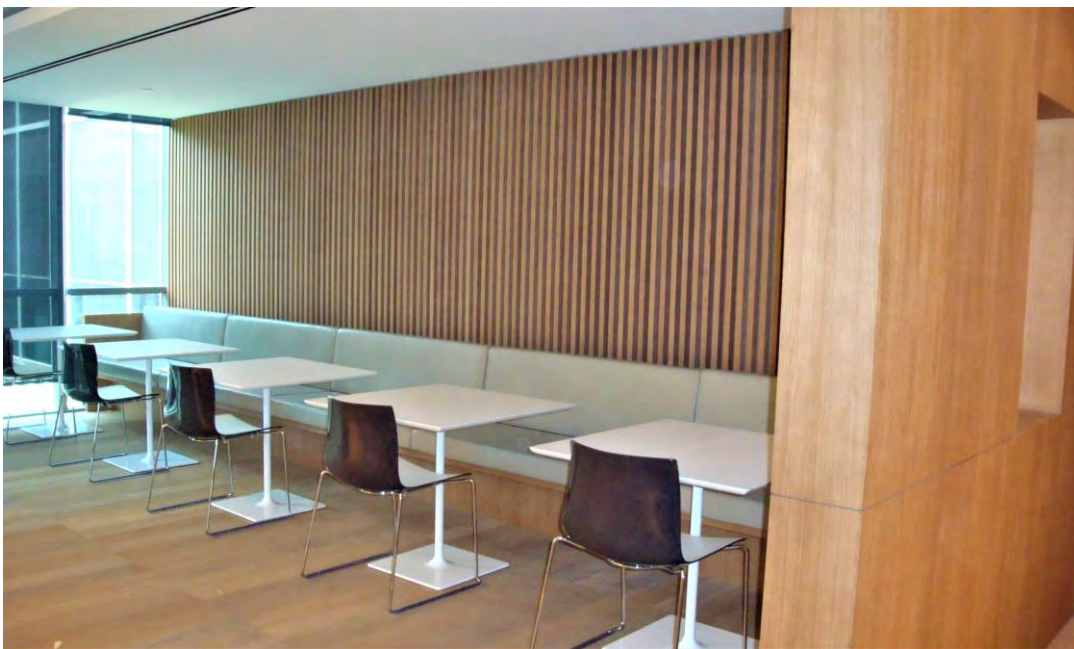
CARBON HOLDING



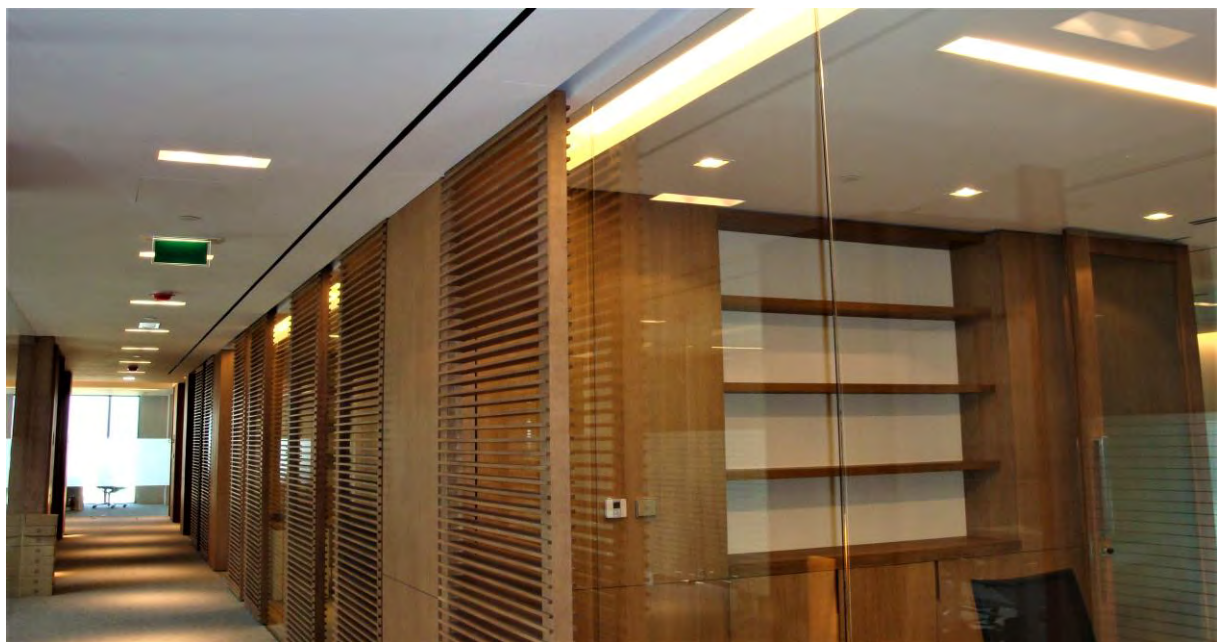
BOSTON CONSULTING GROUP



BOSTON CONSULTING GROUP



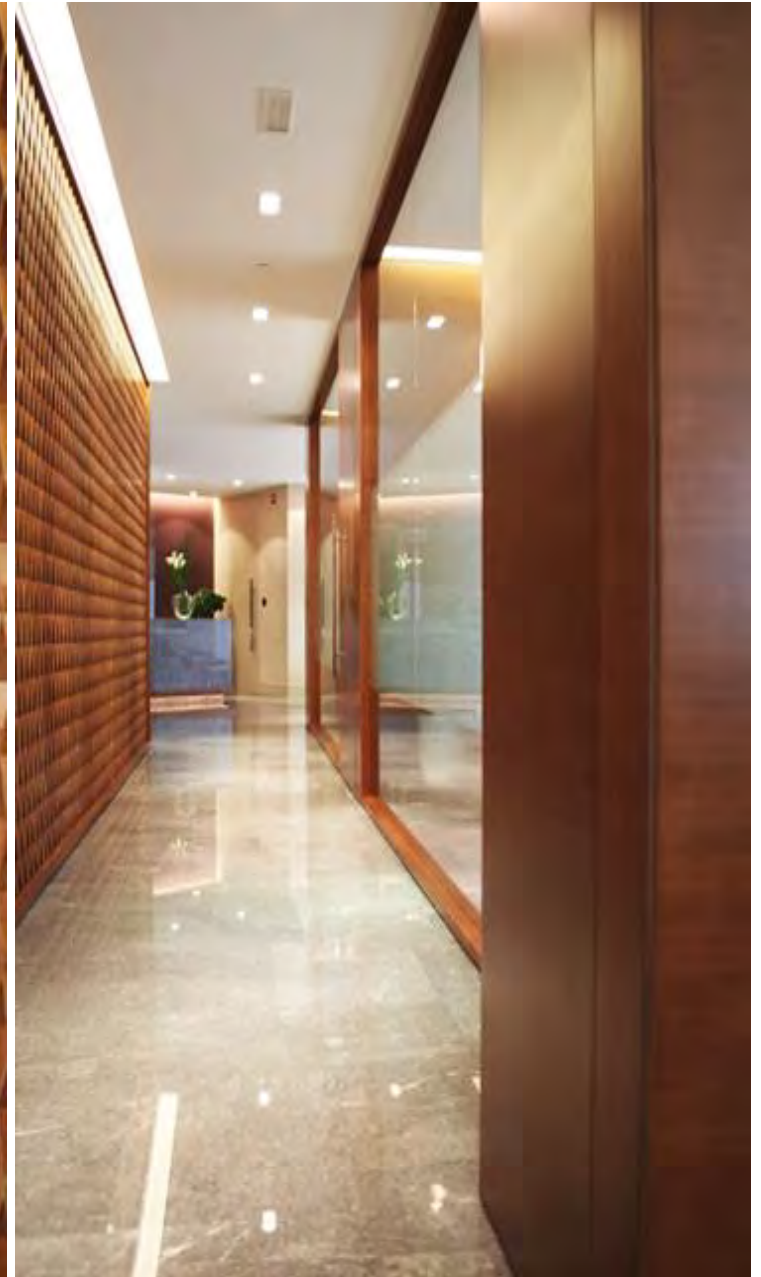
BOSTON CONSULTING GROUP



EMIRATES TOWER L37



EMIRATES TOWER L37



EMIRATES TOWERS L37



EMIRATES TOWERS L37



EMIRATES TOWERS L44



EMIRATES TOWERS L44



EMIRATES TOWERS L44



EMIRATES TOWERS L44



EMIRATES TOWERS L49



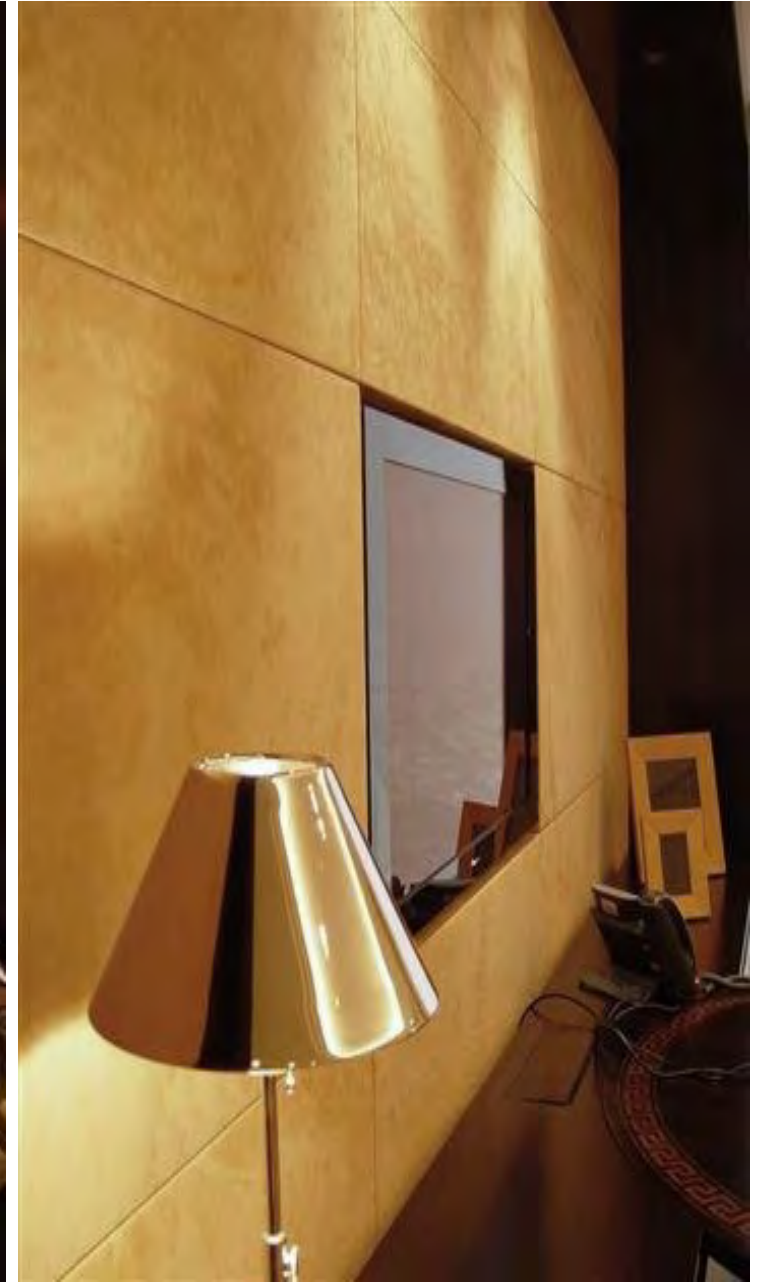
EMIRATES TOWERS L49



EMIRATES TOWERS L49



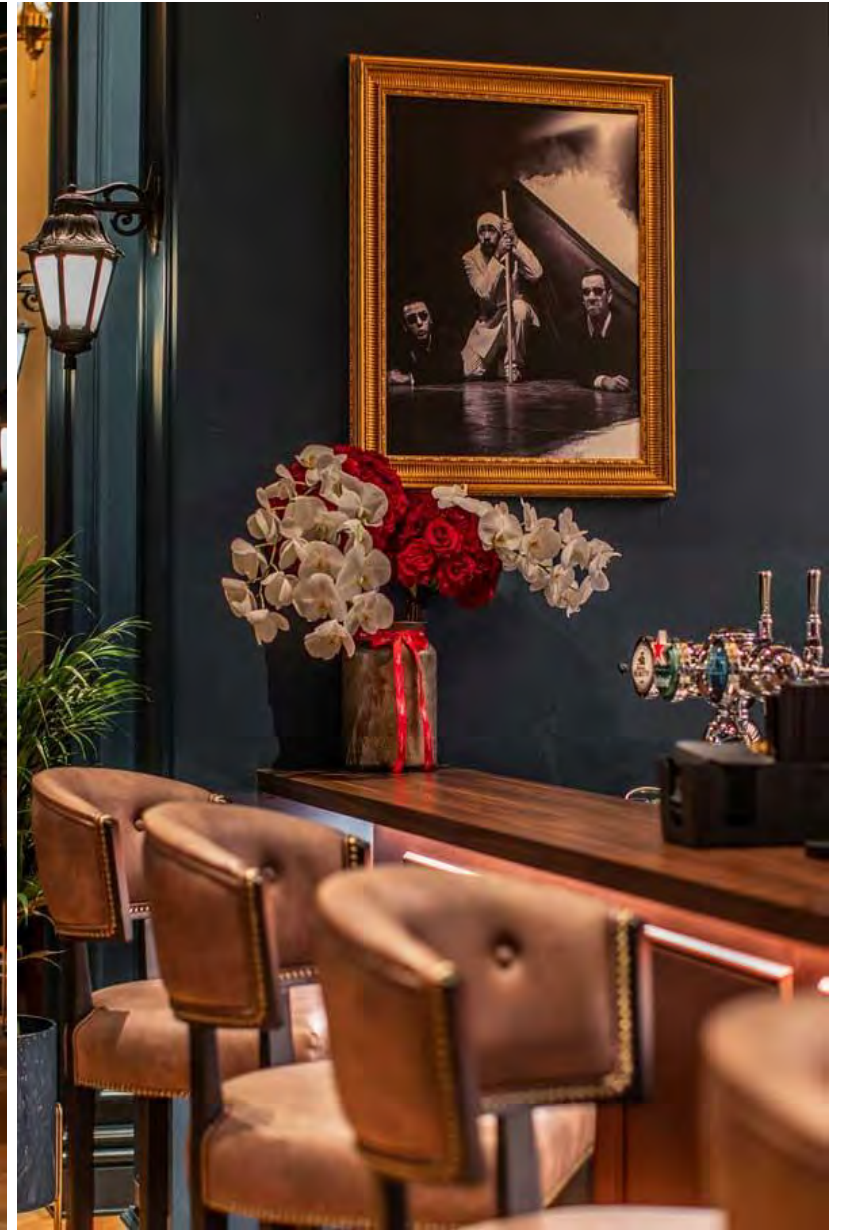
EMIRATES TOWERS L49



EMIRATES TOWERS L49



TANGO RESTO-BAR



TANGO RESTO-BAR



TANGO RESTO-BAR



BVLGARI M15



BVLGARI M15



BVLGARI M15



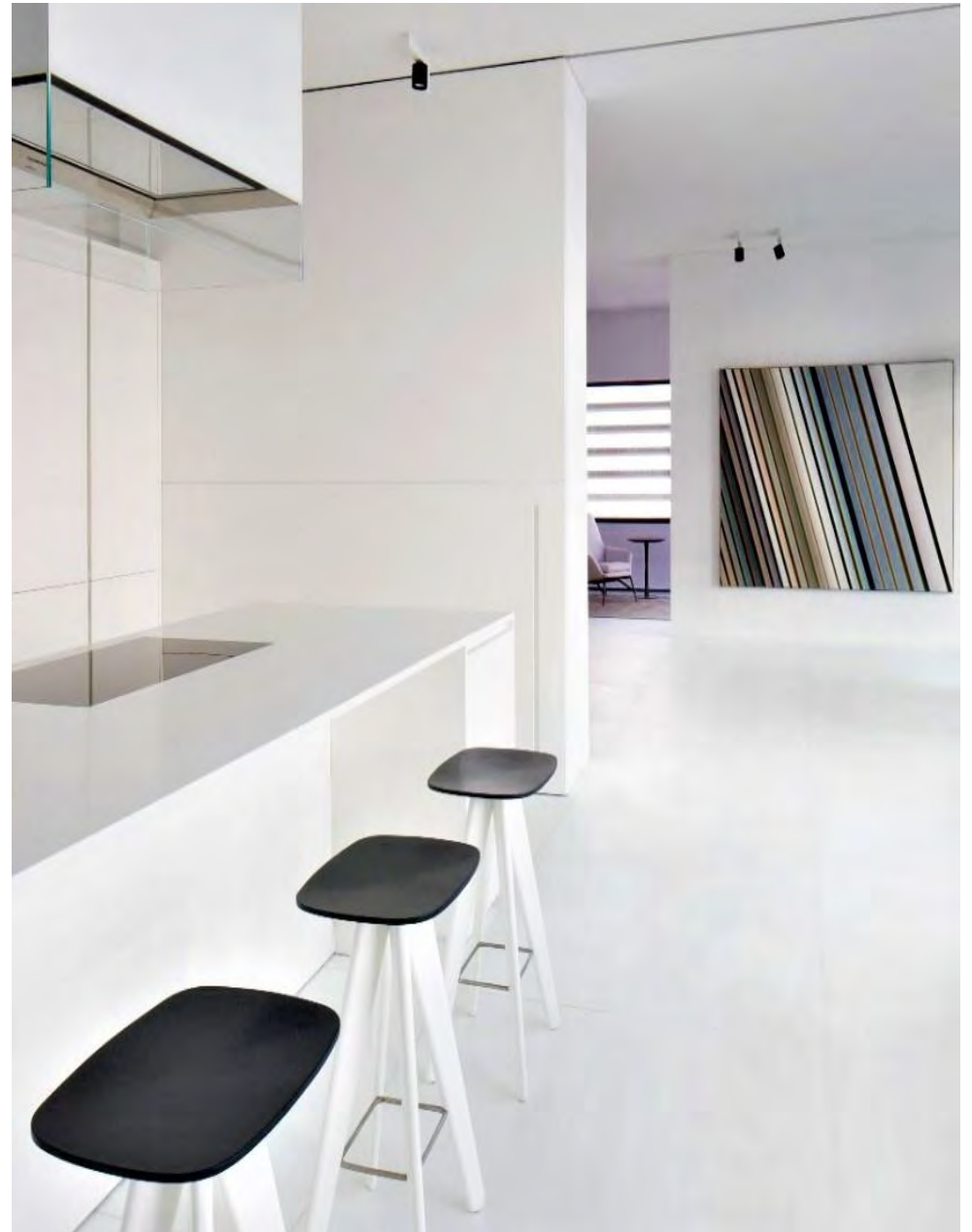
INDEX TOWER PENTHOUSE



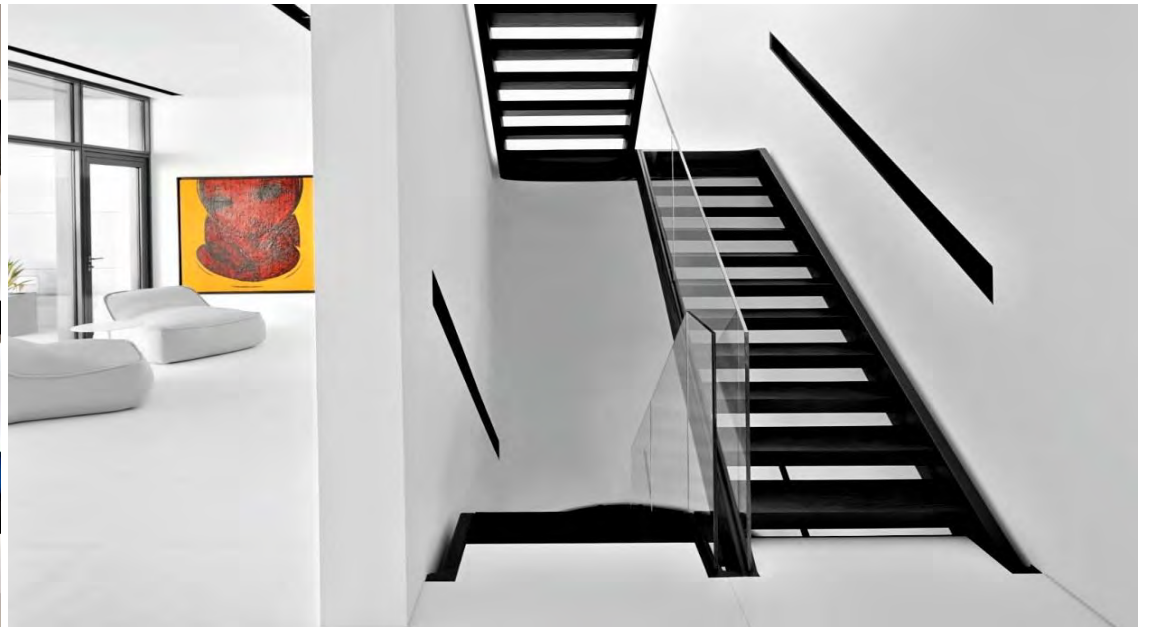
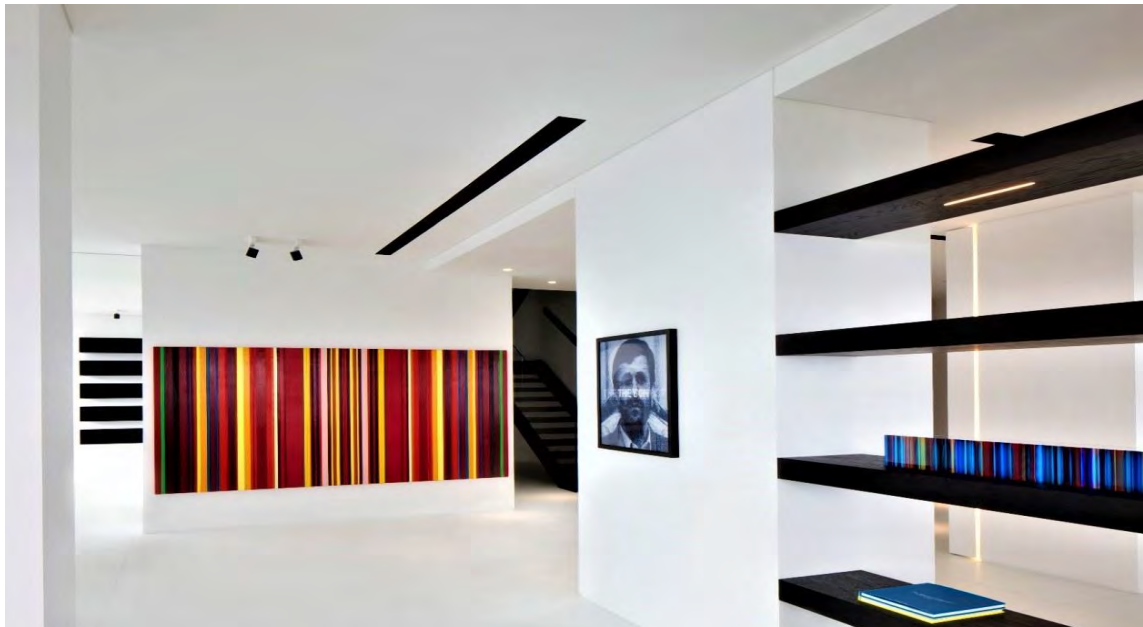
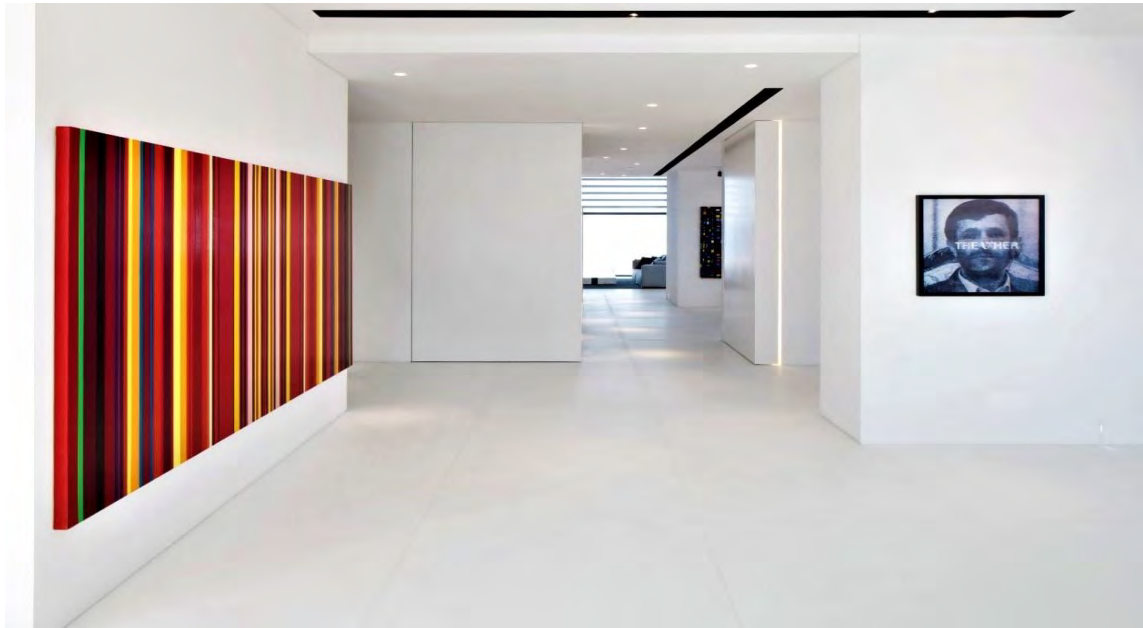
INDEX TOWER PENTHOUSE



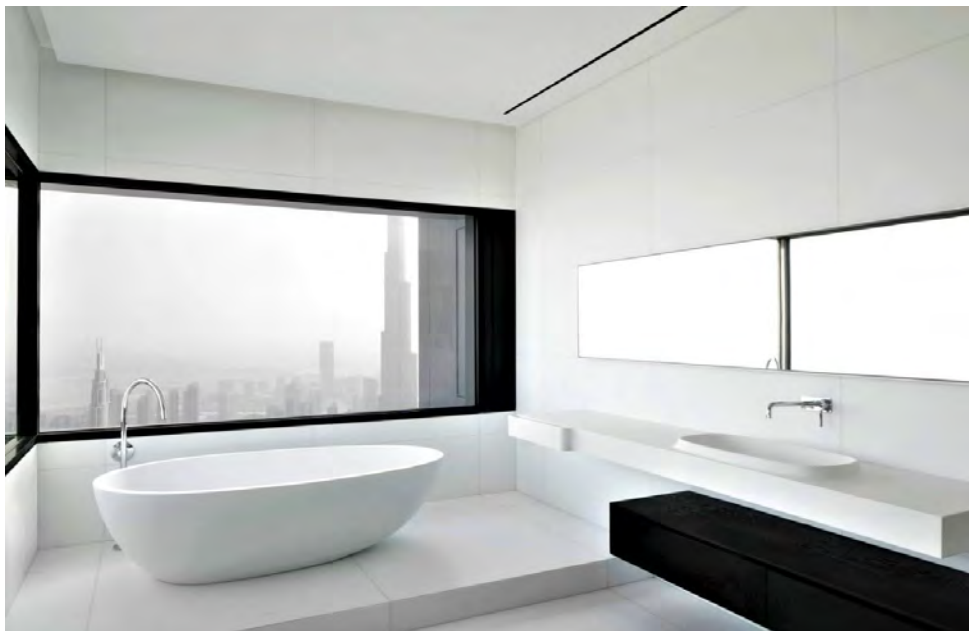
INDEX TOWER PENTHOUSE



INDEX TOWER PENTHOUSE



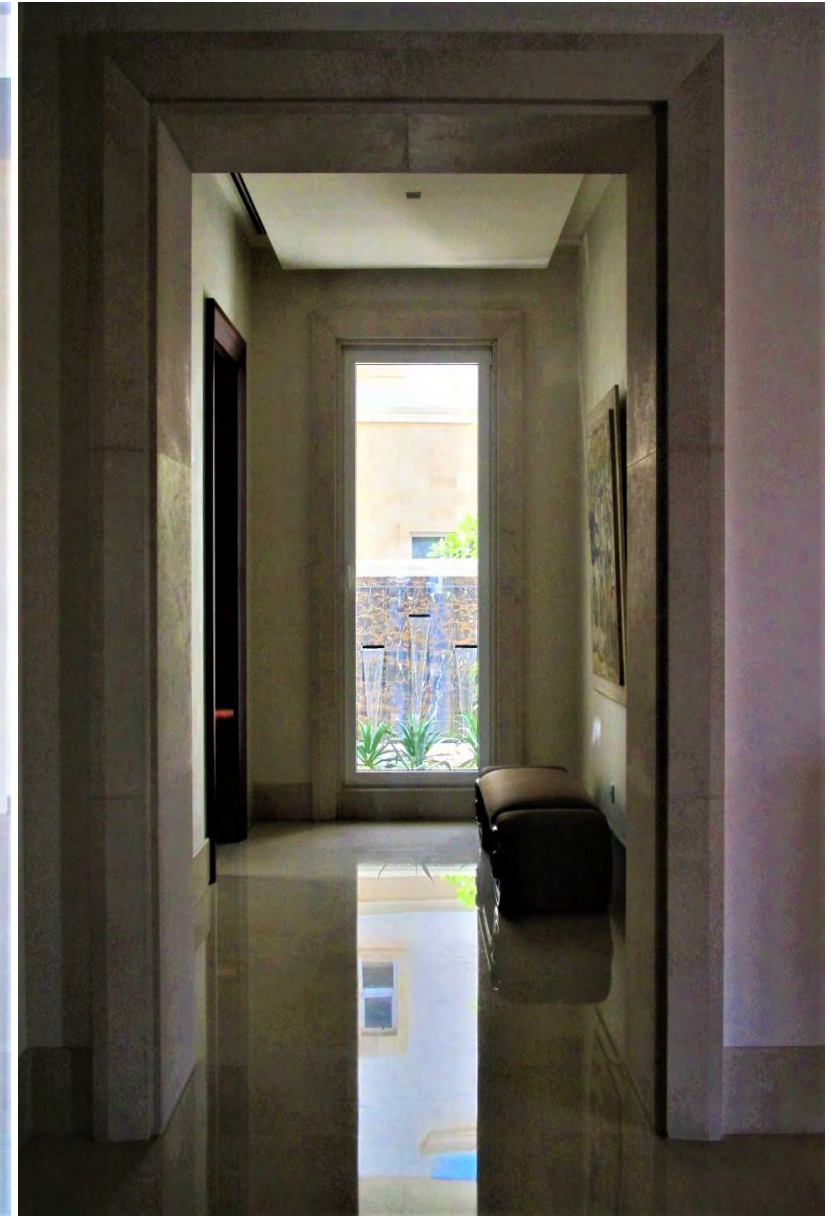
INDEX TOWER PENTHOUSE



EMIRATES HILLS L33



EMIRATES HILLS L33



EMIRATES HILLS L33



EMIRATES HILLS L33



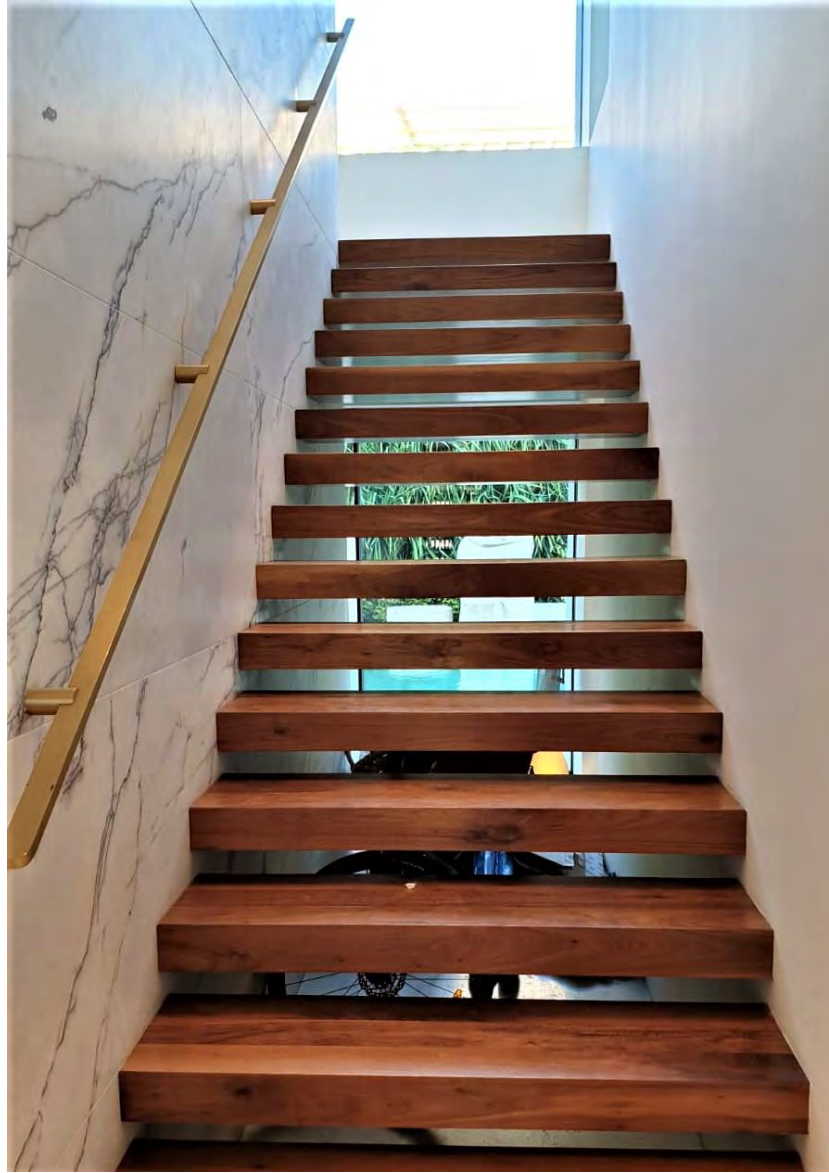
EMIRATES HILLS L33



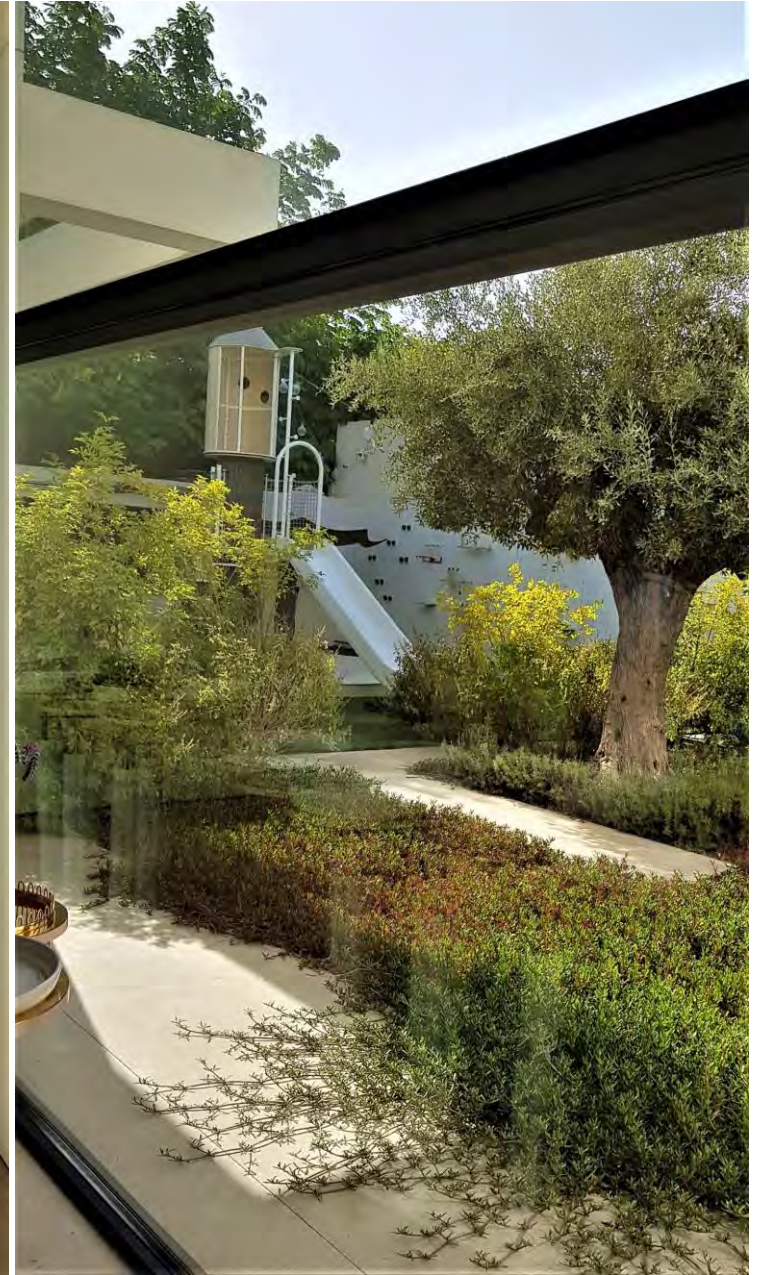
EMIRATES HILLS L33



VILLA UMM AL SHEIF



VILLA UMM AL SHEIF



VILLA UMM AL SHEIF



VILLA UMM AL SHEIF

